



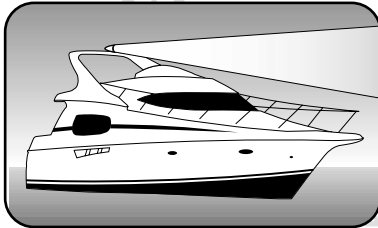
A marine searchlight has to be capable of performing a range of tasks from locating buoys to illuminating a narrow channel and occasionally, searching for a man overboard. Therefore it needs to be designed to offer the best combination of beam spread (width) and intensity (length), for both shorter and longer range work. Typically, our spot beams have a 7° beam spread as opposed to 40° on a flood beam and will consequently reach at least 3 times further.

We quote performance of our searchlight range in two ways; Candlepower and Lux. Candlepower is a useful guide to actual light produced but does not measure the efficiency of reflector design to project that light at the target. The most relevant comparison guide is LUX, which is the measurement of actual light available at a given distance. In order to be able to distinguish a reasonable level of detail, a level of one Lux is generally considered to be necessary.

We ensure that all our Searchlights and Floodlights will always deliver 100% of their rated light output by using only Sealed bulb units which will remain corrosion free throughout their life.

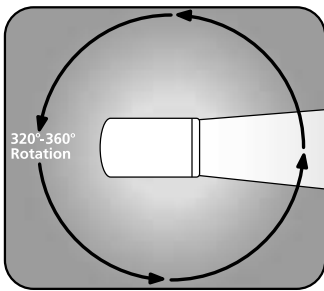
### Searchlight Performance Data

Model No	Description	Range at 1 Lux	Candle Power
60020	135 SL RCL	262 Metres (865ft)	100,000
61050	155 SL RCL	268 Metres (885ft)	100,000
62026	130mm (5") RCL	300 Metres (990ft)	100,000
60010	255 SL RCL	315 Metres (1040ft)	200,000
60080	146 SL RCL	386 Metres (1275ft)	175,000
63022	150mm (6") RCL	418 Metres (1380ft)	200,000
62040	180mm (7") RCL	450 Metres (1460ft)	230,000
63042	150mm (6") RCL	680 Metres (2210ft)	600,000
62042	200mm (8") RCL	719 Metres (2375ft)	500,000

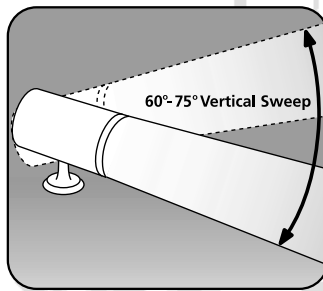


### Remote Control Lights

The advantage of the Remote Control is that it allows you to fit the light in the best location for maximum effectiveness. They are an increasingly popular addition on power boats, helping locate buoys, moorings and channel markers. Control is by joystick or touchpad. Secondary remote control kits can be bought for most models which allow control from either the flybridge or main helm.



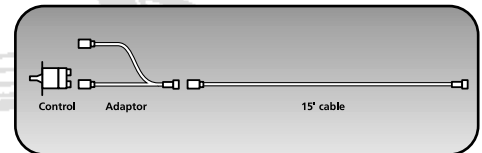
320°-360° Rotation



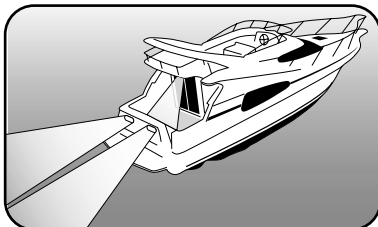
60°-75° Vertical Sweep



Control & 15' cable included with all Remote Control Lights, Extension Cables also available.



Dual Station Kits also available.



### Floodlights

Bracket mounted floodlights give good service in deck illumination, especially on small fishing boats and commercial craft.

Flush mount floodlights provide a clean installation ideally suited for leisure craft. Two beam shapes are available, trapezoidal for deck illumination and flood for transom mounting. In each case bulb adjustment allows the beam to be directed to the required area.



Remote Control

# Searchlights -

## 155 SL RC Searchlight

Our new leading light for style, performance and value. Sweeping curves complement the latest pleasurecraft profiles. Fingertip control of the watertight halogen sealed beam will pick out hazards nearly 900ft away. Just check out the value!

- 1 lux at 268 metres (885 ft).
- Easily replaceable 125mm (5") halogen sealed beam delivers 100,000 candlepower.
- Full 320° horizontal rotation, 75° vertical sweep.
- Complete with joystick remote control (12 Volt dc model) or complete with water resistant electronic touch-pad remote control including joystick option (12/24 Volt dc).
- Electronic control includes automatic 20° sweep feature, two speed movement - Fast for searching, Slow for pinpointing target, plus automatic transmission of 'SOS' distress signal through 360° in emergency.

- Complete with 4.5m (15ft) cable, with optional extension cables.
- Tough thermoplastic housing and base.
- Optional secondary remote control panel for dual helm stations - Instant command from each panel without need to select station (12/24 Volt dc model only).

**Size:** 16cm wide x 20cm long x 20cm high (6<sup>3</sup>/<sub>8</sub>" x 8" x 8").

**Weight:** 2.3kg (5lb)

- 61050-0012** 12 Volt dc, fuse 10 amp.
- 61050-1224** 12/24 Volt dc, fuse 10 amp (electronic control).
- 18753-0528** Replacement sealed beam 12/24 Volt dc, 100,000 cp.

### Secondary Remote Control Kits and Extension Harnesses.

for **61050-0012** see page 31.

for **61050-1224** see this page below.



## 150 (6") RC Searchlight

Brilliant Remote Control Searchlights with digital multi-function processor control, plus option HID (High Intensity Discharge) light source. Truly the ultimate searchlight.

1 lux at 680 metres (2210ft) - HID models with 600,000 candlepower spot beam.

1 lux at 418 metres (1380ft) - Sealed beam models with 200,000/50,000 candlepower spot/flood beam.

- Full 360° horizontal rotation, 70° vertical sweep.
- Water resistant electronic touch-pad remote control including joystick option.
- Automatic 20° sweep search feature.
- Two-speed movement - Fast for searching, Slow for pinpointing target.
- In emergency, offers automatic transmission of 'SOS' distress signal through 360°.
- Complete with 4.5m (15ft) cable, with optional extension cables.
- Exceptionally durable chrome or brass housing

and base (except 63020 - chrome on zinc base)

- Optional secondary electronic remote control panel for dual helm stations. Instant command from each panel without need to select station.

**Size:** 28cm long x 15cm wide x 33cm high (11" x 6" x 13") except 63020 - 23cm (9") high.

**Weight:** 5kg (11lb)

- 63042-0012** 12 Volt dc HID, fuse 15 amp.
- 63042-0024** 24 Volt dc HID, fuse 20 amp.
- 63022-0024** 12/24 Volt dc sealed beam, fuse 15 amp.
- 64046-0007** Replacement HID bulb, 12 Volt dc, 600,000 cp.
- 64046-0008** Replacement HID bulb, 24 Volt dc, 600,000 cp.
- 64046-0006** Replacement sealed beam 12/24 Volt dc, 200,000/50,000 cp.



63022 and 63042

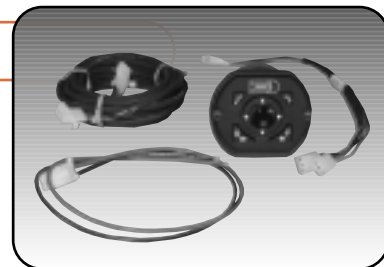
## Secondary Remote Control Kits (Electronic)

Secondary Remote Control kits allow searchlights to be operated from both upper and lower helm stations.

Kit includes secondary control panel, adaptor and 4.5m (15ft) cable.

Secondary harness must be selected from Extension Harness options.

- Can be operated from any control panel without need for selector station.
- 64044-0000** 12/24 Volt dc (160 RC, 155 SL w/electronic control)



## Extension Harness (Electronic Controls)

Extension harnesses enable remote controls to be fitted further from the light than standard cables allow, and are needed to install secondary remote control kits.

- For 155SL (12/24 Volt dc) and all 150mm (6") RC models.

- 64042-1011** 3m (10ft) harness
- 64042-1007** 4.5m (15ft) harness
- 64042-1008** 7.6m (25ft) harness.
- 64042-1009** 15.2m (50ft) harness.





### 135 SL RC Searchlight

**A remote control searchlight, developed with the 7-15 metre (20 to 50 ft) powerboat in mind, with many benefits of existing units at a greatly reduced cost.**

- 1 lux at 262 metres (865 ft).
- Easily replaceable halogen sealed beam delivers 100,000 candle power.
- Supplied complete with joystick remote control.
- Optional secondary full control panel for dual helm stations.
- 320° horizontal rotation, 75° vertical sweep.

- All materials are non-corrosive.
- Complete with 4.5m (15ft) cable, with optional extension cables.
- Size:** 18cm wide x 18.5cm long x 21cm high (7" x 8 1/8" x 7 7/8").
- Weight:** 2.7kg (6lb).
- 60020-0000** 12 Volt dc, fuse 10 amp.
- 60020-0024** 24 Volt dc, fuse 5 amp.
- 18753-0178** Replacement sealed beam, 12/24 Volt dc, 100,000 cp.



### 146 SL RC Searchlight

**A high performance searchlight for medium sized yachts, remotely controlled from helm station.**

- 1 Lux at 386 metres (1275ft).
- Easily replaceable halogen sealed beam delivers 175,000 candle power.
- Supplied complete with water resistant joystick remote control.
- Tough, corrosion resistant Lexan housing.
- Full, 360° horizontal rotation, 60° vertical sweep.

- Optional secondary full control panel for dual helm stations.
- Complete with 4.5m (15ft) cable, with optional extension cables.
- Size:** 22cm wide x 26cm long x 26cm high (8 1/2" x 10 1/8" x 8 1/16").
- Weight:** 4kg (9lb)
- 60080-0012** 146SL 12 Volt dc, fuse 10 amp.
- 60080-0024** 146SL 24 Volt dc, fuse 5 amp.
- 18753-0455** Replacement sealed beam, 12/24 Volt dc, 175,000 cp.

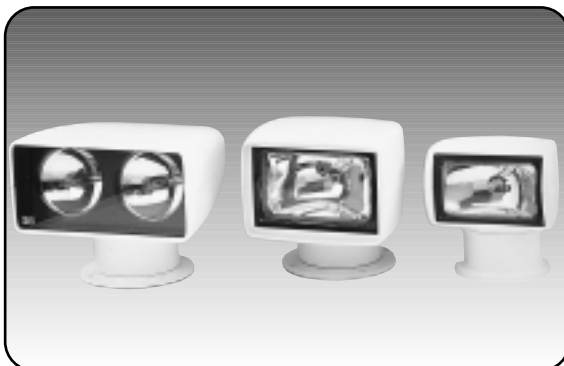


### 255 SL RC Searchlight

**A stylish dual bulb searchlight for medium to larger yachts, remotely controlled from helm station.**

- 1 lux at 315 metres (1040ft).
- Easily replaceable halogen sealed beams deliver 200,000 candle power.
- High tech design and styling for powerboats.
- Supplied complete with water resistant joystick remote control.
- Full, 360° horizontal rotation, 60° vertical sweep.
- Optional secondary full control panel for dual helm stations.

- Tough, weatherproof and corrosion resistant design.
- Complete with 7.5m (25ft) cable, with optional extension cables.
- Size:** 27cm wide x 28cm long x 23cm high (10 1/2" x 10 5/16" x 8 13/16").
- Weight:** 9.6kg (21lb)
- 60010-2012** 255SL 12 Volt dc, fuse 10 amp.
- 60010-2024** 255SL 24 Volt dc, fuse 5 amp.
- 18753-0336** Replacement sealed beams, 12/24 Volt dc, 100,000 cp each.





Remote Control

# Searchlights -

## 130 (5"), 180 (7") & 200 (8") RC Searchlights

**Remote mounting searchlights electrically controlled from helm station for leisure, commercial and patrol crafts.**

- 1 lux at 300 metres (990ft) - 130 (5").
- 1 lux at 418 metres (1380ft) - 180 (7").
- 1 lux at 719 metres (2375ft) - 200 (8").
- 130mm (5") has both spot and flood beams.
- 180 (6") and 200mm (8") model have spot beam only.
- Single joystick controls both 70° vertical and 450° horizontal sweep.
- Variable speed control enables fast search and yet precise targeting.
- Optional secondary full control panel for dual helm stations.
- Internal brake system holds beam firmly on target.
- Heavily chromed all brass beam housing and base unit.
- 2.5m (8ft) wiring cable, with optional extension cables.

### 130mm (5") Remote Control Searchlight

**Size:** 18cm long x 13cm wide x 24cm high (7" x 5" x 9½").

**Weight:** 3.4kg (7½lb).

**62026-4002** 12 Volt dc, 9 lux at 100m (330ft), fuse 10 amp.

**67296-0000** Replacement sealed beam, 12 Volt dc, 100/50,000 cp.

### 180mm (7") Remote Control Searchlight

**Size:** 28cm long x 18cm wide x 33cm high (11" x 7" x 13").

**Weight:** 4.1kg (9lb).

**62040-4002** 12 Volt dc, 18 lux at 100m (330ft), fuse 20 amp.

**62040-4006** 24 Volt dc, 18 lux at 100m (330ft), fuse 10 amp.

**67262-0000** Replacement sealed beam, spot /flood, 12 Volt dc, 200,000/50,000 cp

**66165-0000** Replacement sealed beam, flood only, 24 Volt dc, 230,000 cp

### 200mm (8") Remote Control Searchlight

**Size:** 28cm long x 21cm wide x 36cm high (11" x 8¼" x 14¼").

**Weight:** 5kg (11lb).

**62042-4006** 24 Volt dc, 52 lux at 100m (330ft), fuse 10 amp.

**98040-0520** Replacement sealed beam, 24 Volt dc, 500,000 cp.



130 (5")



180 (7") and 200 (8")

## Secondary Remote Control Kits

Secondary Remote Control kits allow searchlights to be operated from both upper and lower helm stations.

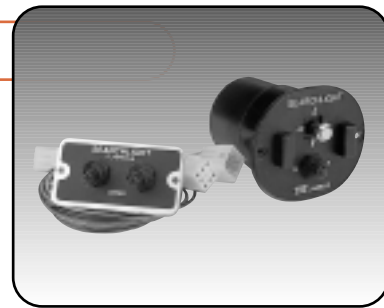
Kit includes secondary control panel, station selector panel V splices and butt connectors.

Secondary harness must be selected from Extension Harness options.

**43670-0005** 12 Volt dc (135 SL)

**43670-0004** 12 Volt dc (146 SL, 255 SL, 155 SL, 130, 180 & 200 RC) 24 Volt dc (146 SL)

**18753-0335** 24 Volt dc (255 SL, 180 & 200 RC)



## Extension Harness

Extension harnesses enable remote controls to be fitted further from the light than standard cables allow, and are needed to install secondary remote control kits.

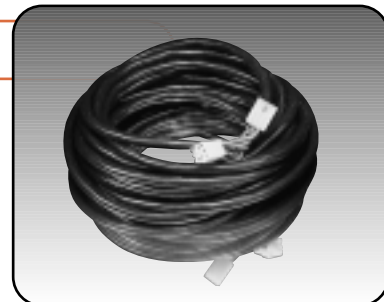
- For 135 SL, 146SL, 155SL (12 Volt dc), 255SL, 130 (5"), 180 (7") and 200 (8") RC models.

**43990-0013** 3m (10ft) harness.

**43990-0014** 4.5m (15ft) harness.

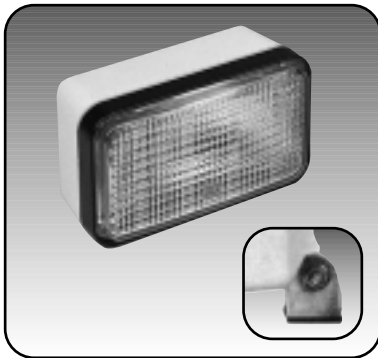
**43990-0015** 7.6m (25ft) harness.

**43990-0016** 10.7m (35ft) harness.

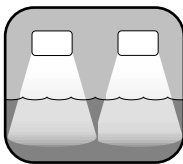




6" (150mm)



5" (130mm)

Transom  
Mounted  
FloodBulkhead  
Mounted  
Trapazoidal

## Deck Floodlights - New Ultra Bright Model

A range of compact, purpose designed floodlights for deck, cockpit or boarding point on leisure, commercial, fishing and safety craft available in two sizes.

- Special trapazoidal beam pattern, designed to be mounted above one end of horizontal area to be illuminated, spreads light evenly over the surface.
- Sharp cut off enables accurate selection of area to be illuminated minimising stray light.
- Blue Bulb technology improves visibility in low light conditions.
- Sealed beam tungsten halogen bulb, with 450 hour average life.
- Stainless steel universal mounting bracket.

### 150mm (6") Floodlight

**Size:** 155mm long x 101mm wide, (4" x 6").

**Weight:** 0.7kg (1.4lb).

- 45900-4000** 12 Volt dc Ultra Bright white, fuse 6 amp.
- 45900-0000** 12 Volt dc white, fuse 6 amp.
- 45900-0001** 24 Volt dc white, fuse 3 amp.
- 45903-4000** Replacement sealed beam, 12 Volt dc, 65 watt.
- 45903-0000** Replacement sealed beam, 12 Volt dc, 30 watt.
- 45903-0001** Replacement sealed beam, 24 Volt dc, 60 watt.

### 130mm (5") Floodlight

**Size:** 127mm long x 77mm wide, (5" x 3").

**Weight:** 0.5kg (1lb).

- 45900-1000** 12 Volt dc white, fuse 6 amp.
- 45903-0002** Replacement sealed beam, 12 Volt dc.

## Flush Mount Floodlights

Flush Mount Floodlights unobtrusively light up deck, cockpit or boarding point.

- Available with two bulb types - flood (for glare free below deck mounting) or trapazoidal (for deck illumination).
- Easily adjustable light angle, up to 7° horizontally and 12° vertically.
- Sealed beam tungsten halogen bulb, with 450 hour average life.
- Tough polypropylene housing.

**Size:** 22.5cm long x 17cm high x 8cm deep (8<sup>7</sup>/<sub>8</sub>" x 6<sup>3</sup>/<sub>16</sub>" x 3<sup>1</sup>/<sub>16</sub>").

**Weight:** 1.5kg (3.3lb).

- 45960-0000** Floodlight with trapazoidal beam 12 Volt dc, fuse 5 amp.
- 45960-0001** Floodlight with flood beam 12 Volt dc, fuse 5 amp.
- 18753-0352** Replacement trapazoidal sealed beam, 12 Volt dc.
- 18753-0351** Replacement flood sealed beam, 12 Volt dc.

## Commercial Duty Quartz Floodlight

Rugged, deep ribbed, heat dissipating die cast aluminium casing houses Quartz bulb with 2000 hour average life for 24/7 use under all conditions.

- Reflector with superior anodic finish and polished specularity for wide beam spread.
- Thermal and impact resistant tempered lens with silicone gasket seals.
- Aiming bars, 13mm ( 1/2") stem mounting with 180° aiming section and repositioning stop.

**Size:** 9-1/2" wide x 7-3/4" high x 3-1/2" deep (24cm x 20cm x 9cm)

**Weight:** 4lb (1.8kg).

- 14780-0001** Quartz floodlight (excluding bulb).
- 43950-0000** 12 Volt dc bulb, 150 watt.
- 43950-0010** 24 Volt dc bulb, 250 watt.