



At Jabsco we are the world's largest manufacturers and suppliers of small craft marine toilets - so we've built a fair degree of experience in heads systems and their design and installation.

Far and away the most widely used marine toilets are manually operated. Our 29090/29120 series have been the most popular type worldwide over the last ten years. We have now improved them even further with stronger materials, new styling and new features that make them even easier to service and maintain. With modern design and materials manual toilets are easy to install and service, simple and clean to use and offer exceptional value for money. Remember there are two bowl sizes to choose from, and normally even the smallest boats have enough space for the comfort of a full sized bowl (29120 series) for just a little extra cost.

Our luxury range of Quiet Flush and Designer Style electric toilets feature low noise levels, so off watch crew members can continue to sleep when the toilet is used! There are options of either flushing with fresh water from the boat's own supply or with salt, river or lake water from outside the boat. DS Series toilets have domestic style bowls with all pump components hidden from view. Quiet Flush Toilets have the pump at the rear of a narrow base and so can be installed in more narrow spaces. Three way controls allow water level to be increased or decreased.

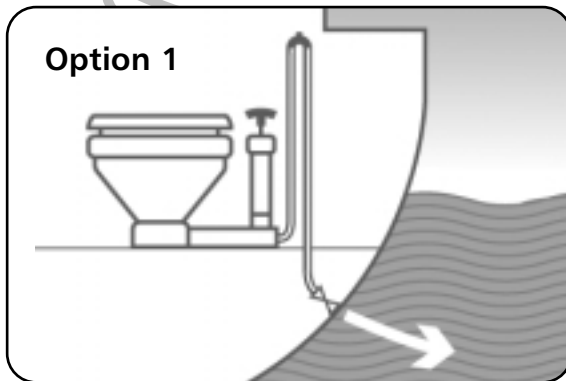
We at Jabsco all understand the importance of keeping the environment clean and free from waste. However it is unfortunate that there is no internationally accepted legislation to guide us on how to deal with the waste from our toilet systems. For this reason Jabsco have produced this guide which details the four most common ways of dealing with toilet waste. It is important to note that your choice of system may be governed by your own national and local rules and regulations.

Quiet Flush Conversion kits allow owners of 37010 and many other types of electric or manual toilets to upgrade to full Quiet Flush specification. All our electric toilets use surprisingly little power, and are simple to operate for newcomer and experienced crews alike.

Manual toilets can be upgraded to electric operation by the use of the 29200 Series Conversion. This has been designed to bolt directly in place of the manual pump and use the same pipework as previously installed. There are two major advantages to this design - it makes the operation of electric toilets simple for boatowners and boatbuilders alike, whilst still offering the option of a quick return to manual operation in the event of a power failure.

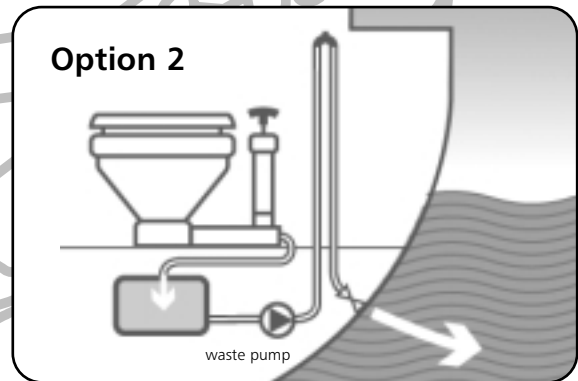
Our 29200 Series Conversion kits are designed with economy of power in mind, driving two pumps from a single motor, and with their rapid bowl emptying a normal crew of four can expect to use less than one amp/hour a day through toilet use.

All our toilets can be used on inland waterways, rivers, lakes or the sea, and can be installed above or below the waterline. However, attention must be paid to installation instructions for safety and installations must meet with local regulations concerning overboard discharge. All our toilets are designed to discharge overboard or into holding tanks as necessary.



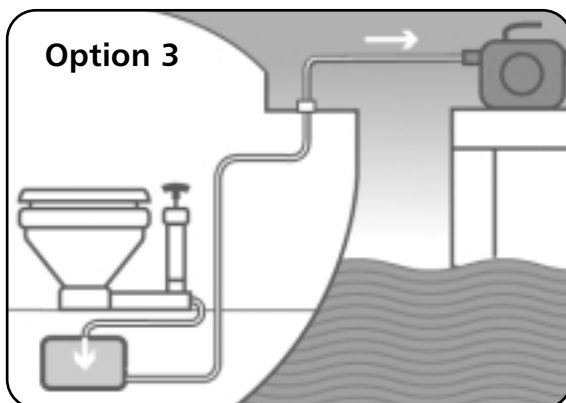
Option 1

Discharge waste directly into a non-restricted area of water using the toilet's own pump and an anti-siphon loop.



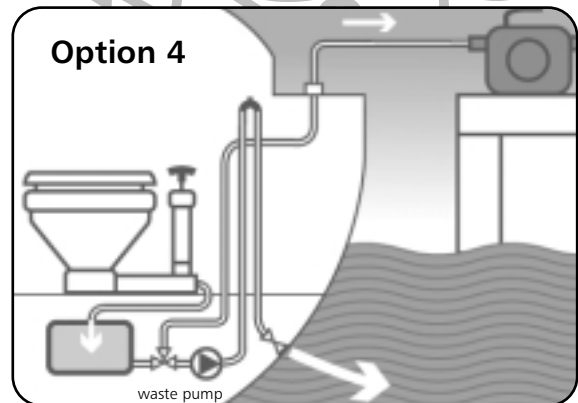
Option 2

Collect waste in an on-board holding tank so that it can be discharged later when you are in un-restricted waters using an electric or manual pump.



Option 3

Collect waste in an on-board holding tank for discharge later to a Shore Station using a dockside suction pump or portable utility pump.



Option 4

A combination of Option 2 and 3 to give you the flexibility of discharging waste wherever most convenient and without risk to the environment.



## Manual Toilets

Jabsco are the world's largest manufacturer of small craft marine toilet systems and we have applied all our experience into our latest manual toilet refining the design that is used by nearly all boatbuilders worldwide.

Jabsco's manual toilets are now better than ever!  
**Better looking - styling compliments all boat interiors.**  
**Stronger - mouldings are 30% stronger and resistant to chemical attack.**

**Even easier to maintain - full size seal assembly allows instant access to the full bore of the pump cylinder.**

**Better performing - valve spring ensures instant self priming in all conditions.**

- ① Contoured handle and flush control lever conveniently positioned.
  - ② Powerful swirl action for efficient flushing.
  - ③ Full sized external seal housing allows quick clean seal replacement and instant access to pump cylinder.
  - ④ Hygienic pure white vitreous china bowl for ease of cleaning.
  - ⑤ Full size regular bowl or compact bowls available.
  - ⑥ Constant 38mm bore wastepipe.
  - ⑦ Crevice free contours and smooth mouldings for added hygiene.
  - ⑧ Reversible pump mounting for choice of right or left handed installation.
  - ⑨ **New! Seat and Lid - ergonomically designed to improve the appearance and comfort of the toilets.**
  - ⑩ Automatic vacuum breaker for easier pumping.
  - ⑪ Powerful self-priming pump for above or below waterline installation.
  - ⑫ Angled pump housing and long stroke for ease of operation.
  - ⑬ Multi-angled discharge elbow contributes to ease of installation.
- Aortic joker valve for automatic back-flow prevention.
  - All fastenings face front or top for ease of maintenance.
  - Flexible design for both overboard discharge and holding tanks.
  - Corrosion resistant materials throughout for reliable fresh or salt water service.

**Fitting:** Connections for 19mm (3/4") id inlet hose, 38mm (1 1/2") id outlet hose.

**Size:** Regular: 47cm wide x 48cm deep x 35cm high (18 1/2" x 19" x 13 3/4")

Compact: 45cm wide x 41cm deep x 34cm high (17 3/4" x 16" x 13 1/2")

**Weight:** Regular: 11.6 kg (23 1/2 lb). Compact 9.3 kg (20 1/2 lb).

**29120-2000** Regular bowl size.

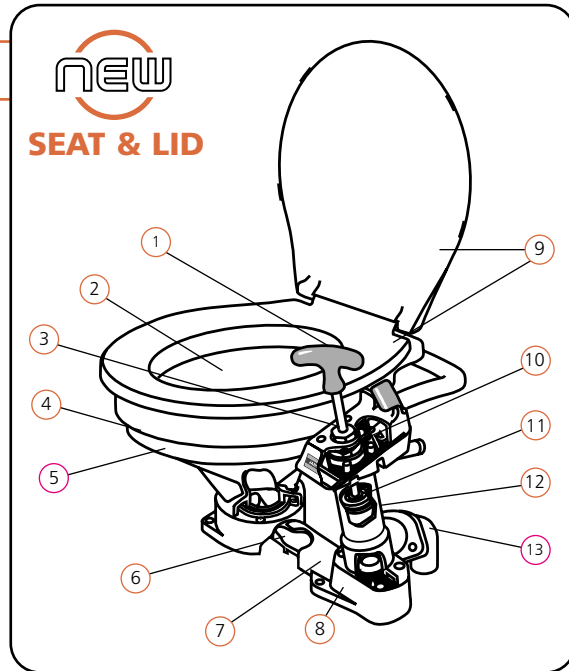
**29090-2000** Compact bowl size.

**29045-2000** Service kit.

**29127-1000** Replacement Regular Seat and Lid.

**29097-1000** Replacement Compact Seat and Lid.

For service and spare parts listing see page 164.



Piston Rod and Seal Assembly

Reversible Pump Mounting



Regular Size

Compact Size

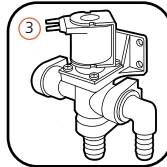
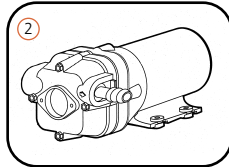
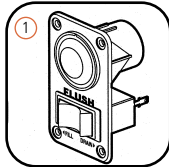


### DS14 & DS17 Designer Style Electric Toilets

Jabsco DS14 and DS17 Designer Style Electric Toilets bring a new level of elegance to marine toilets. These sleekly contoured toilets will add an element of luxury aboard any vessel. The very low noise level of the flush pump and evacuation pump also contribute to on-board comfort.

The two models differ only in height, allowing them to be fitted either on a raised platform or on the floor. Both are designed to fit snugly against a vertical bulkhead, with all wiring and plumbing concealed by the bowl to give a clean uncluttered look. The bowl and full size seat assembly has been designed for comfort. Both models can be supplied to flush with either fresh or salt water.

- ① Three way control panel allows the operator to select a normal flush and empty cycle or raise or lower the water level as required.
  - ② 37275 Series are supplied with a remote mounted self priming pump to bring in sea, river or lake water to flush.
  - ③ 37075 Series are supplied with a solenoid valve and syphon breaker assembly for connection to any existing pressurised water system capable of delivering 13.5 lpm (3 gpm) or more. The syphon breaker ensures there is no back flow from the toilet into the water system.
- All models are very quiet running.
  - A powerful waste water evacuation pump with built in macerator is included with both models.
  - Available in standard pure white china bowl or new stylish Bone coloured bowl (special order only).
  - Hygienic, vitreous china bowl for ease of cleaning.
  - Mounting bolts included.
  - May be mounted up to 1m (3ft) below the water line.
  - ISO 8846 MARINE (Ignition Protection).



DS14

### DS14 Low Profile Electric Toilets

**Fitting:** Connections for 19mm (3/4") id inlet hose and 25mm (1") outlet hose.

**Size:** 35.5cm high x 39.5cm wide x 48cm deep (14" x 15 1/2" x 19")

**Weight:** 37075 Series - 22.2kg (50lb)  
37275 Series - 24.5kg (54lb)

- 37075-0092** White bowl with solenoid valve 12 Volt dc, fuse 25 amp
- 37075-0094** White bowl with solenoid valve 24 Volt dc, fuse 15 amp
- 37275-0092** White bowl with intake pump 12 Volt dc, fuse 25 amp
- 37275-0094** White bowl with intake pump 24 Volt dc, fuse 15 amp

- 90197-0000** Service kit, seals & gaskets
- 30617-1000** Flush pump parts - 37275 series only

**'Bone Coloured' Designer Style Toilets are manufactured to special order only**

- 37075-2092** Bone bowl with solenoid valve 12 Volt dc, fuse 25 amp
- 37075-2094** Bone bowl with solenoid valve 24 Volt dc, fuse 15 amp
- 37275-2092** Bone bowl with intake pump 12 Volt dc, fuse 25 amp
- 37275-2094** Bone bowl with intake pump 24 Volt dc, fuse 15 amp

For service and spare parts listing see page 168.



DS17

### DS17 Regular Height Electric Toilets

**Fitting:** Connections for 19mm (3/4") id inlet hose and 25mm (1") outlet hose.

**Size:** 44cm high x 39.5cm wide x 48cm deep (17" x 15 1/2" x 19")

**Weight:** 37075 Series - 26kg (58lb)  
37275 Series - 29kg (64lb)

- 37075-1092** White bowl with solenoid valve 12 Volt dc, fuse 25 amp
- 37075-1094** White bowl with solenoid valve 24 Volt dc, fuse 15 amp
- 37275-1092** White bowl with intake pump 12 Volt dc, fuse 25 amp
- 37275-1094** White bowl with intake pump 24 Volt dc, fuse 15 amp

- 90197-0000** Service kit, seals & gaskets
- 30617-1000** Flush pump parts - 37275 series only

**'Bone Coloured' Designer Style Toilets are manufactured to special order only**

- 37075-3092** Bone bowl with solenoid valve 12 Volt dc, fuse 25 amp
- 37075-3094** Bone bowl with solenoid valve 24 Volt dc, fuse 15 amp
- 37275-3092** Bone bowl with intake pump 12 Volt dc, fuse 25 amp
- 37275-3094** Bone bowl with intake pump 24 Volt dc, fuse 15 amp

For service and spare parts listing see page 168.



## Quiet Flush Electric Toilets

**Quiet Flush Toilets are a variation of the well proven and popular 37010 Series Electric Toilet. Designed to radically reduce noise levels, Quiet Flush Toilets make life on board more comfortable for all crew members, even those sleeping! Two versions are available, either for connection to the vessels existing pressurised water system or supplied with a remote mounted pump to use salt, river or lake water to flush.**

- ① Three way control panel allows the operator to select a normal flush and drain cycle or to lower or raise the water level.
  - ② 37245 Series are supplied with a remote mounted quiet running flush pump to bring in sea, river or lake water for flushing.
  - ③ 37045 Series are supplied with a solenoid valve and syphon breaker assembly for connection to any existing pressurised water pump with a flow rate of 13.5 lpm (3 gpm) or more. The syphon breaker prevents back flow from the toilet to the water system.
- May be mounted up to 1m (3ft) below the water line.
  - Both models feature a powerful macerator discharge pump that breaks up waste and evacuates the toilet.
  - Both models are supplied complete with 2m (6ft) of white hose to neatly connect the inlet bowl fitting to either the solenoid valve/syphon breaker assembly or inlet pump.
  - Available in regular or compact bowl sizes.
  - Hygienic, pure white vitreous china bowl for ease of cleaning.
  - ISO 8846 MARINE (Ignition Protection).

**Fitting:** Connections for 19mm (3/4") id inlet hose and 25mm (1") discharge hose. (Adaptor included for connection to 38mm (1 1/2") discharge hose.)

**Size:** Compact Bowl:  
35cm high x 35cm wide x 45cm deep (13 3/4" x 14" x 17 1/2")  
Regular Bowl:  
37cm high x 37cm wide x 50cm deep (14 1/2" x 14 1/2" x 19 3/4")

**Weight:** 37045 Compact: 15.4kg (34lb)  
37045 Regular: 17.3kg (38lb)  
37245 Compact: 17.2kg (38lb)  
37245 Regular: 19.1kg (42lb)

**37045-0092** Compact size, 12 Volt dc model, fuse 25 amp

**37045-0094** Compact size, 24 Volt dc model, fuse 15 amp

**37045-1092** Regular size, 12 Volt dc model, fuse 25 amp

**37045-1094** Regular size, 24 Volt dc model, fuse 15 amp

**37245-0092** Compact size, 12 Volt dc model, fuse 25 amp

**37245-0094** Compact size, 24 Volt dc model, fuse 15 amp

**37245-1092** Regular size, 12 Volt dc model, fuse 25 amp

**37245-1094** Regular size, 24 Volt dc model, fuse 15 amp

**29127-1000** Replacement Regular Seat and Lid.

**29097-1000** Replacement Compact Seat and Lid.

**90197-0000** Service kit, seal & gaskets

**30617-1000** Service kit, flush pump - 37245 series only

*For service and spare parts listing see page 167.*



37045-Series



37245-Series

## Quiet Flush Electric Kits

**Build your own Quiet Flush Toilet using existing Jabsco 37010 Series Toilets or any Manual or Electric toilet bowl with bolt fixing on a 95mm (3 3/4") diameter circle, to upgrade to Quiet Flush operation. The same options are available, as the complete toilet, for fresh or salt water flush.**

- ① Three way control panel allows the operator to select a normal flush and drain cycle or to lower or raise the water level.
  - ② 37255 Series are supplied with a remote mounted quiet running flush pump for use with salt, river or lake water.
  - ③ 37055 Series are supplied with a solenoid valve and syphon breaker assembly for connection to any existing pressurised pump of 13.5 lpm (3 gpm) or more.
- Comprehensive kit has all necessary components, except bowl, seat and lid.
  - ISO 8846 MARINE (Ignition Protection).

**Fitting:** Connections for 19mm (3/4") id inlet hose and 25mm (1") discharge hose. (Adaptor included for connection to 38mm (1 1/2") discharge hose.)

**Size:** 32cm long x 21cm wide x 8cm high (12" x 8 1/4" x 3 1/4")

**Weight:** 37055 Series: 5.7kg (12 1/2lb)  
37255 Series: 7.5kg (16 1/2lb)

**37055-0092** 12 Volt dc model, fuse 25 amp

**37055-0094** 24 Volt dc model, fuse 15 amp

**37255-0092** 12 Volt dc model, fuse 25 amp

**37255-0094** 24 Volt dc model, fuse 15 amp

**90197-0000** Service kit, seal & gaskets

*For service and spare parts listing see page 167.*



37055-Series



37255-Series



## Electric Toilets

**Household size bowl complements the luxury of electric flushing with choice of compact bowl where space is at a premium.**

- Hygienic pure white vitreous china bowl for ease of cleaning.
- New Seat and Lid – ergonomically designed to improve the appearance and comfort of the toilet
- Stainless steel and bronze fastenings for reliable salt water service.
- Flushing pump self-priming up to 1.9m (6ft) vertical lift.
- May be mounted 1m (3ft) below the waterline.
- Equally suitable for overboard or holding tank discharge.
- Built-in back flow preventer.
- For installations fitted with vented loops use a solenoid valve (see below).
- ISO 8846 MARINE (Ignition Protection).

**Fitting:** Connections for 16-19mm ( $\frac{5}{8}$ " -  $\frac{3}{4}$ " id inlet hose, 25mm or 38mm (1" or 1½") id outlet hose.

**Size:** Compact: 35cm wide x 43cm deep x 35cm high (13 $\frac{3}{8}$ " x 17 $\frac{3}{8}$ " x 14").  
Regular: 38cm wide x 47cm deep x 37cm high (14 $\frac{3}{4}$ " x 18 $\frac{1}{2}$ " x 14 $\frac{5}{8}$ ").

**Weight:** Compact: 15.4kg (34lb) Regular: 17.3kg (38 $\frac{1}{2}$ lb)

**37010-0090** Compact size 12 Volt dc model, fuse 25 amp.

**37010-0096** Compact size 24 Volt dc model, fuse 15 amp.

**37010-1090** Regular size 12 Volt dc model, fuse 25 amp.

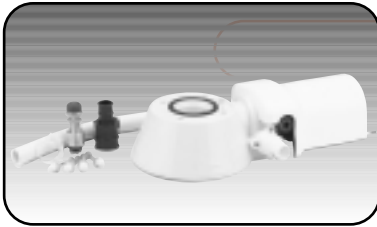
**37010-1096** Regular size 24 Volt dc model, fuse 15 amp.

**29127-1000** Replacement Regular Seat and Lid.

**29097-1000** Replacement Compact Seat and Lid.

**37040-0000** Service kit, seals & gaskets.

*For service and spare parts listing see page 166.*



## Electric Kits

**Convert our Manual Toilet Compact and Regular bowl models to full electric operation without need to alter existing inlet or discharge seacocks.**

- Also converts most toilets with 4 bolt fixing bowls and bolt centres on a 95mm (3 $\frac{3}{4}$ " diameter circle such as RM69, TMC, Aquamarine, Plastimo, Groco, Raritan, Wilcox Crittenden, Mansfield and Sealand.
- Push button flushing for ease and simplicity of operation.
- Comprehensive kit has all necessary parts, including flushing pump, macerator pump, switch, adaptors, clamps, hose and fastenings.
- Flushing pump self-priming up to 1.9m (6ft) vertical lift.

■ May be installed 1m (3ft) below the waterline.

■ For installations fitted with vented loops use a solenoid valve on inlet hose (see below).

■ ISO 8846 MARINE (Ignition Protection).

**Fitting:** Connections for 16-19mm ( $\frac{5}{8}$ " -  $\frac{3}{4}$ " id inlet hose, 25 or 38mm (1" or 1½") id outlet hose.

**Size:** 34cm long x 21cm wide x 8cm high (13 $\frac{3}{4}$ " x 8 $\frac{1}{4}$ " x 3 $\frac{1}{4}$ ").

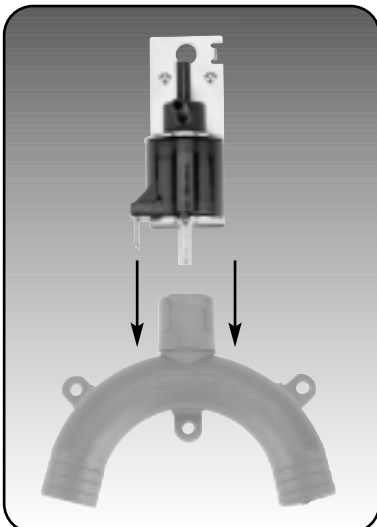
**Weight:** 5.7kg (12½lb).

**37010-0092** 12 Volt dc model, fuse 25 amp.

**37010-0097** 24 Volt dc model, fuse 15 amp.

**37040-0000** Service kit, seal and gaskets.

*For service and spare parts listing see page 166.*



## Solenoid Valve for Electric Toilets

**Where 37010 Series Electric Toilets are installed below the waterline we recommend installing a loop on the inlet pipework rising at least 20cm (8") above the highest (static or heeled) waterline level, and installing a vented loop fitting at the top of the loop to stop water syphoning over the loop and flooding the vessel.**

The extra suction generated by 37010 Series electric toilets will open the valve in vented loops, drawing in air and preventing priming. The 37068-0000 Solenoid Valve attaches directly to Jabsco Vented Loops and is wired to the toilet's on/off switch. It closes whenever the toilet pump is operated and ensures full pump priming.

**37068-0000** Solenoid valve, 12 or 24 Volt dc.

**For use with:**

29015-0000 19mm ( $\frac{3}{4}$ " Vented Loop (see page 13).

Recommended accessory 2925-0011 19mm ( $\frac{3}{4}$ " In-Line Return Valve (see page 13).



## Electric Conversion for Manual Toilets

This design makes installation of electric toilets both affordable and practical. Boatbuilders find it easier to offer the option of electric or manual toilets to their customers. Boatowners appreciate modern design and the safety of a unit that can be reconverted to manual operation inside fifteen minutes in the event of a power failure. Boatbuilder and Boatowners benefit from a conversion kit that makes use of existing manual toilet pipework.

- Complete for 29090/29120 Series, compact and regular bowl, left or right hand manual toilets.
- A range of adaptors replace the conversions standard macerator housing to allow fitment to a wide range of manufacturers' manual toilets. See list of adaptors.
- Simple rotary control knob offers choice of "Flush and Discharge" or "Discharge Only".
- Existing discharge pipework remains undisturbed for ease of installation.
- Miserly power consumption, typically less than 1.0 amp/hour each day.
- Vigorous 20 lpm (4.4 gpm) flush rate for rapid flushing, typically less than 10 seconds.
- Crevice free contours for added hygiene.
- Two powerful self-priming pumps for above or below waterline installation.
- Dual role design macerates waste for both overboard discharge and holdings tanks.
- Automatic inlet water checkvalve for additional security.
- Corrosion resistant materials throughout for reliable fresh or salt water service.

- Manual pump may be refitted to maintain service in event of power failure.
- Strong, abrasion resistant plastic mouldings for consistent colour match and high gloss finish.
- Retains existing joker valve to maintain automatic back-flow protection.
- ISO 8846 MARINE (Ignition Protection).

**Fitting:** Connections for 19mm (3/4") id inlet hose and for existing discharge elbow and outlet hose.

**Size:** 27cm high x 9cm wide x 15cm deep (10 1/2" x 3 1/2" x 6")

**Weight:** 3.3kg (7 1/2lb)

**29200-0120** Toilet conversion, 12 Volt dc, fuse 25 amp

**29200-0240** Toilet conversion, 24 Volt dc, fuse 15 amp

**29101-0000** Service kit, seals and gaskets.

**Adaptors available:**

**29060-0000** Adaptor to fit Brydon Boy and PAR 59128, RM69, Mansfield and Sealand 751, Simpson Lawrence 444, standard and large bowl models.

**29080-0000** Adaptor to fit Groco HE, Groco HF.

**29110-0000** Adaptor to fit Raritan compact, Raritan PH II, Sealand 752.

**29128-0000** Adaptor to fit Wilcox Crittenden Head Mate 1460, Wilcox Crittenden Winner \*R4042C

*\*Requires minor repositioning of discharge hose*

*For service and spare parts listing see page 165.*



## Vented Loops

An essential safety component on all inlet and discharge pipework of toilets installed below the static or heeled waterline.

- Simple valve system ensures water cannot syphon over pipework loops.
- Available in three sizes for 38mm (1 1/2"), 25mm (1") and 19mm (3/4") i.d. hose.
- Internal valve avoids the need for external venting.
- Moulded in tough, corrosion proof Marelon®.

**Fitting:** Connections for 38mm (1 1/2"), 25mm (1") and 19mm (3/4") i.d. hose.

**Size:** 38mm model: 12cm high x 19.5cm wide x 4.5cm deep (4 3/4" x 7 3/4" x 1 3/4").  
25mm model: 16cm high x 19.5cm wide x 4.5cm deep (6 1/4" x 7 3/4" x 1 3/4").  
19mm model: 7cm high x 10cm wide x 2.5cm deep (2 3/4" x 4" x 1").

**Weight:** 38mm model: 0.25kg (1/2lb).  
25mm model: 0.40kg (3/4lb).  
19mm model: 0.05kg (3/2oz).

**29015-0000** 19mm (3/4") model.

**29015-0020** 25mm (1") model.

**29015-0010** 38mm (1 1/2") model.



## Inlet Non-return Valve

A check valve gives quicker and easier flushing response on many manual and 37010-Series electric toilet installations.

- For use with manual and electric toilets using sea water flush.
- Simply fitted in inlet suction hose, close to seacock.
- Prevents loss of prime in above waterline installations.

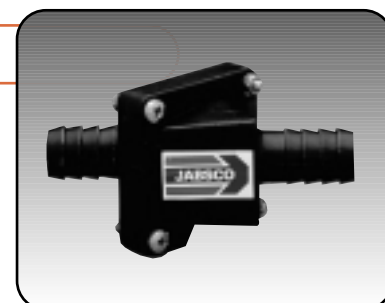
- Retains water in bowl of 37010-Series electric toilets installed above waterline.

**Fitting:** Connections for 19mm (3/4") id hose.

**Size:** 10.8cm long x 5.5cm wide x 5cm high (4 1/4" x 2 1/8" x 2")

**Weight:** 0.1kg (1/4 lb)

**29295-0011** Inlet Non-Return Valve





## Run-Dry Macerator Waste Pump

The Jabsco Macerator is now fitted with an exclusive (patent pending) Run-Dry Protection Device. This new feature makes accidental run-dry impeller damage a thing of the past.

- Detects the absence of fluid then shuts-off pump before impeller is damaged
- Sensor provides a 16 - 20 second run-dry period to allow initial priming of pump
- Interrupting power supply to the macerator resets the Run-Dry Device
- Flow rate to 45 lpm (12 gpm)
- Self priming to 1.2m (4ft) vertical lift.
- Complies with USCG 183.410 and ISO 8846 MARINE (Ignition Protection)

**Fitting:** Inlet Port: 38mm (1½") Hose Barb plus 1½" NPT. Inlet Port, RV Model: 75mm (3") Hose. Discharge Port: 25mm (1") Hose Barb.

**Size:** 29cm long x 12cm wide x 9cm high (11⅜" x 4⅞" x 3⅝")  
RV Model is only 21cm (8¼") long

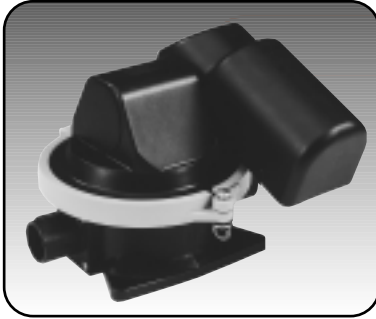
**Weight:** 2.3kg (5lb)

**18590-1000** 12 Volt dc fuse 20 amp (Marine Model)

**18590-1001** 24 Volt dc fuse 15 amp (Marine Model)

**18590-1010** 12 Volt dc fuse 20 amp (RV Model)

For service and spare parts listing see page 152.



## Diaphragm Waste Pump

Heavy duty diaphragm pump passes solids easily and quietly for maximum efficiency in emptying holding tanks.

- 22 lpm (4.5 gpm) output.
- Self-priming up to 1.5m (6ft).
- Very quiet running.
- Will dry run without damage.
- Rated up to three hours continuous use.
- All mechanical parts are fully shrouded for maximum safety.

- ISO 8846 MARINE (Ignition Protection).

**Fitting:** Connections for 38mm (1½") id hose  
**Size:** 28 cm long x 28cm deep x 20cm high (11" x 11" x 7¾")

**Weight:** 2.7kg (6lb)

**59090-0012** 12 Volt dc, fuse 15 amp.

**59090-0024** 24 Volt dc, fuse 10 amp.

For service and spare parts listing see page 153.



## Y-Valve

Robust Y-Valve for use in toilet applications. Allows waste to be pumped overboard or into a holding tank.

- Rotating discharge ports allows shortest routing of hoses.
- Can be operated through bulkhead by use of optional handle extension.
- Can be padlocked so that waste can only go to the holding tank to comply with some local regulations (padlock not included).
- Waste and corrosion resistant construction throughout.

**Fitting:** Connections for both 38mm (1½") ports and 25mm (1") inlet port.

**Size:** 20cm long x 19cm wide x 12cm high (7⅞" x 7¼" x 4⅝")

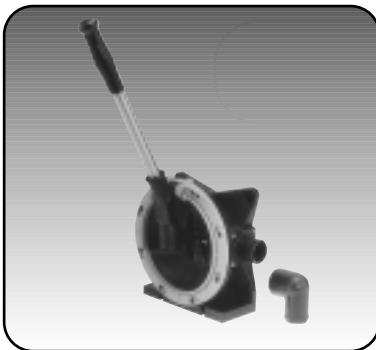
**Weight:** 0.9kg (2lb).

**45490-0000** Y Valve.

**45489-0000** Handle Extension Kit.

**45488-0000** Service Kit.

Padlock NOT included



## Amazon Universal Manual Diaphragm Pump

Manual pump with 38mm (1½") ports and excellent solids handling capability for emptying holding tanks.

- Flow rate of up to 100 lpm (22 gpm).
- Push-fit inlet and outlet elbows swivel through 360° to increase flexibility of installation still further.
- Corrosion resistant materials throughout.
- Quick release clamp ring gives fast access for blockage clearance.

**Fitting:** Connections for 38mm (1½") id hose.  
**Size:** 24cm wide x 24cm high x 15cm deep (9½" x 9½" x 6").

**Weight:** 1.2kg (2.9lb).

**29270-0000** Universal Pump, c/w detachable handle and one push fit elbow.

**29279-0000** Optional Through Deck Kit.

**29266-1000** Additional Push-Fit Elbow.

**29276-1000** Service kit

For service and spare parts listing see page 161.



## Waste Holding Tanks with Waste Pump

Jabsco offers a selection of Waste Tank Systems consisting of a Holding Tank with integral Run-Dry Macerator Pump and a Remote Control Panel to monitor waste level and when needed activate the Macerator Pump.

- Rugged Polyurethane Holding Tank
- Three sizes available - 38, 72 & 158 litres (8, 16 and 32 gallon) Capacity
- Integral Run-Dry Macerator Waste Pump mounted on tank.
- Control includes LEDs to indicate  $\frac{1}{4}$ ",  $\frac{1}{2}$ " and full tank levels
- Control includes Macerator activation switch with Automatic Shut-off Feature

**Fitting:** Inlet Port: 38mm ( $\frac{1\frac{1}{2}}$ " NPT  
Dockside Evacuation Port:  
38mm ( $\frac{1\frac{1}{2}}$ " Hose Barb  
Vent connection: 19mm ( $\frac{3}{4}$ " NPT

**Size:** 38 litre (8 Gal) - 356mm long x 472mm deep x 305mm high (14" x 18" x 12")  
72 litre (16 Gal) 610mm long x 534mm deep x 305mm high (24" x 21" x 12")  
158 litre (32 Gal) - 978mm long x 622mm x deep 305mm high (38 $\frac{1}{2}$ " x 24 $\frac{1}{2}$ " x 12")

**38110-0012** 38 litre (8 Gal), 12 Volt dc Pump  
**38110-0024** 38 litre (8 Gal), 24 Volt dc Pump  
**38120-0012** 72 litre (16 Gal), 12 Volt dc Pump  
**38120-0024** 72 litre (16 Gal), 24 Volt dc Pump  
**38140-0012** 158 litre (32 Gal), 12 Volt dc Pump  
**38140-0024** 158 litre (32 Gal), 24 Volt dc Pump



## Waste Holding Tank

The simple answer to holding tanks on small craft and to converting existing overboard discharge toilets.

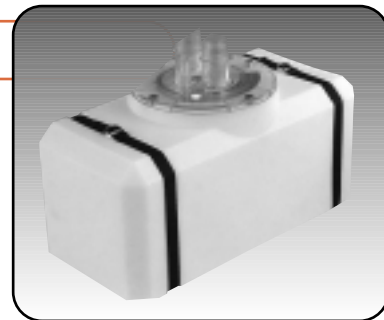
- Compact, lightweight and rugged polyethylene construction.
- Approximately 23 litre (5 gallon) capacity.
- Ready to install with inlet, outlet and vent hose connections, internal suction hose, and mounting straps.
- Compatible with manual and electric toilets and all pump-out systems.

**Fitting:** Connections for 38mm ( $\frac{1\frac{1}{2}}$ " id inlet hose, 19mm ( $\frac{3}{4}$ " id vent hose.

**Size:** 46cm long x 22cm wide x 33cm high (18" x 9" x 13").

**Weight:** 3.8kg (8 $\frac{1}{2}$  lb).

**38110-0000** Waste holding tank.  
**38235-0000** Waste tank fitting



## Toilet Pumpgard™

The Pumpgard™ inlet strainer protects manual or electric toilets from pump malfunctions caused by debris.

- Simply installed in 19mm ( $\frac{3}{4}$ " id inlet hose.
- Transparent housing allows instant inspection.
- Screw off top allows quick in place cleaning and removal of debris.

**Fitting:** Connections for 19mm ( $\frac{3}{4}$ " id hose.

**Size:** 12cm long x 7cm wide x 6cm high (4 $\frac{3}{4}$ " x 2 $\frac{3}{4}$ " x 2 $\frac{1}{2}$ ").

**46400-0000** Toilet Pumpgard™.  
**20420-0040** Service kit for Replacement Filter Screen.



## Toilet Seat

Replaces old seats and lids on most marine toilets with round compact bowls.

- Now standard fit on all Jabsco compact toilets.
- Larger seating surface.
- "No-drop" seat and lid feature.
- Tough, flexible and stylish.

**Fitting:** All round compact bowls with 14cm (5 $\frac{1}{2}$ " seat bolt centres

**Size:** 45cm long x 33cm wide x 4cm deep (17 $\frac{1}{2}$ " x 13" x 1 $\frac{1}{2}$ "

**Weight:** 1.09kg (2.4lb)

**29097-1000** Compact Seat and Lid

