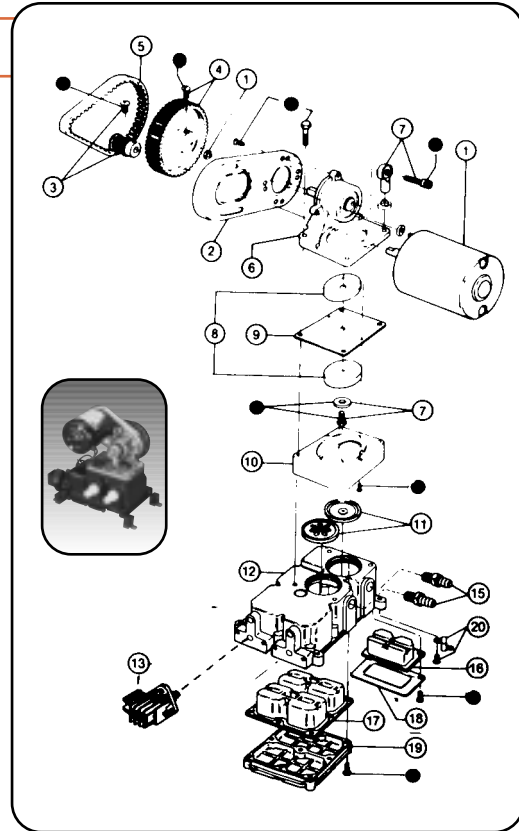


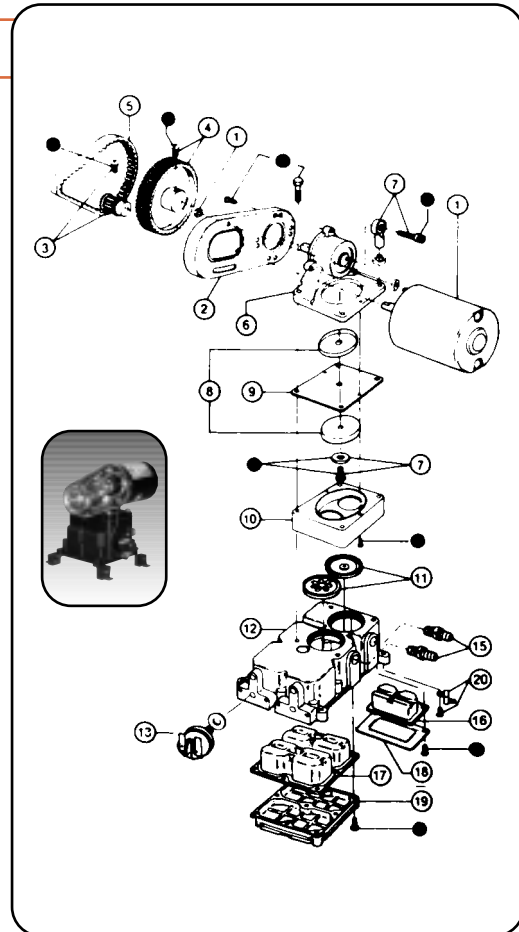
## 36800 Series (was 6600J) Water Pump

Key	Description	Part No	Qty
1	Motor Kit 12 Vdc	30200-0000	1
	24 Vdc	30200-0010	
2	Motor Mount	34628-0000	1
3	Small Pulley	37169-0000	1
4	Large Pulley (with key way)	37170-0001	1
5	Belt	30021-0000 *	1
6	Jack Shaft Assembly	35506-0001	1
7	Connecting Rod Assembly	37173-0001	1
8	Diaphragm Plate	35503-0000	2
9	Diaphragm	30015-0000 *	1
10	Retainer	35497-0000	1
11	Valve Set (Inlet and Outlet)	30004-0000 *	1 set
		35625-1100 †	1
12	Base assembly (See†)	35625-1200 - for 36850 Series	
		37121-0010	1
13	Pressure Switch	37121-0000	1
		37121-0000 - See Note 2	1
15	Ports (Inlet & Outlet) Barb**	37176-0000	1 set
16	Small Pulsation Dampener	37177-0000 *	1
17	Pulsation Dampner	37178-0000 *	1
18	Small Bottom Plate	35628-0000	1
19	Bottom Plate	35623-0000	
20	Vibration Pad Kit	37180-0000	
21	Hardware Kit	37165-0001	1 set
	Service Kit (See*)	30122-0000 *	



## 36950 Series (was 6950J) Water Pump

Key	Description	Part No	Qty	Series	
				1000	2000
1	Motor Kit 12 Vdc	30200-0000	1	X	X
	24 Vdc	30200-0010			
2	Motor Mount	34628-0000	1	X	X
3	Small Pulley	37169-0000	1	X	X
4	Large Pulley (with key way)	37171-0001	1	X	X
5	Belt	30022-0000 *	1	X	X
6	Jack Shaft Assembly	35689-0001	1	X	X
7	Connecting Rod Assembly	37173-0001	1	X	X
8	Diaphragm Plate	35503-0000	2	X	X
9	Diaphragm	30015-0000 *	1	X	X
10	Retainer	35497-0000	1	X	X
11	Valve Set (Inlet and Outlet)	30004-0000 *	1 set	X	X
		44114-1000 †	1	X	
12	Base assembly (See†)	44114-1100 †	1		X
		35620-1200 - for 36955 Series			
13	Pressure Switch	37121-0010	1	X	X
		37121-0000 - See Note 2			
15	Ports (Inlet & Outlet) Barb**	37176-0000	1 set	X	X
17	Pulsation Dampner	37178-0000 *	1	X	
		44127-1000 * †	1		X
19	Bottom Plate	35686-0000	1	X	X
20	Vibration Pad Kit	37180-0000	1 set	X	
		43990-0058	1 set		X
21	Hardware Kit	43990-0071	1 set	X	
		43990-0059	1 set		X
	Service Kit (See*)	30126-0000 *		X	
		43990-0061 *			X



Traditional  
PAR Pumps

# Service Parts -