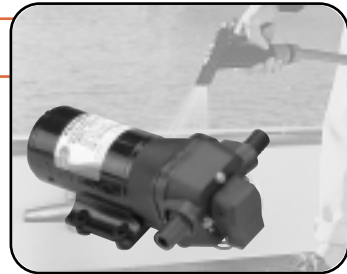




It probably goes without saying that many Jabsco pumps have more than one possible application. Sometimes it is a simple matter of installing the standard product in the different application. Sometimes Jabsco needs to develop the standard product to meet the particular needs of the different application.

Washdown Pumps

Washdown pumps are a development of our Water Pressure System pumps. Higher shut-off pressure switches prevent on/off cycling whilst salt water compatible trigger nozzles let you blast off mud and dirt, and then rinse down.

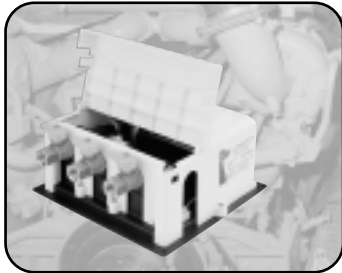


Ballast Pump

Today's Wakeboard and Ski tow boats need to be able to take on water ballast to modify their wake formation. A development of our tried and tested Puppy Pumps lets these specialist craft rapidly take on and dump ballast, whilst modern electronics guard against dry running damage to the impeller.

Shower & Sink Drain

Jabsco's broad range of pump types means that we can provide a choice of solutions according to your needs and budget. Diaphragm pumps such as 37202 and PAR-Max are the choice of charter operators - quiet, and dry running should their pre-filter need cleaning. Many knowledgeable owners still appreciate the ability of our Puppy pumps to handle a wide range of debris. Alternatively a single Submersible Shower Sump pump system can handle several inputs simultaneously and offers great value for money in light usage situations.



Oil Change Pumps

Special variants of our Flexible Impeller pumps make light work of engine and gearbox oil changes on larger engines, whilst our brass hand pumps or drill pumps offer low cost alternatives for smaller engines.

Diesel Transfer Pumps

Jabsco's range of Sliding Vane pumps are designed to give trouble free diesel pumping. They are self priming and so can be mounted in any suitable location away from the fuel tank. They have many uses in the movement of diesel fuel from topping up day tanks to refilling from dock-side oil drums. Their rugged reliability has been proven in the tough environment of off-road earth moving machinery where they are standard fitment worldwide.

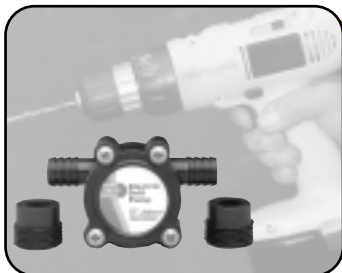


Circulation Pumps

Centrifugal pumps are the correct product for closed circuit circulation systems, such as Off Engine Cooling, Central Heating and other flooded suction applications. Jabsco offers two purpose designed pumps, both capable of arduous commercial duty.

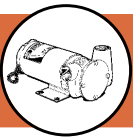
220/240 Volt AC Pumps

Jabsco bronze bodied AC motor pumps are portable and versatile, making them ideal for a wide range of applications wherever AC power is available.



Speciality Products

Our Drill pumps, Handee Hitches and Skipper Clips are old favourites whose multiple uses keep them in constant demand.



PAR-Max 3 Washdown

Compact high pressure deckwash pump.

- Powerful 13.2 lpm (2.9 gpm) flow rate.
- Supplied complete with pumpguard and trigger nozzle.
- Snap-in-ports.
- Self priming up to 3m (10ft).
- High pressure jet blasts mud and silt from anchor chain and decks.
- Waterproof with coated motor and sealed pressure switch for mounting in exposed positions.
- Super quiet, diaphragm design allows dry running.

- Thermal overload protection automatically stops the motor if it overheats due to overloading, with auto re-start feature.
- ISO 8846 MARINE (Ignition Protection).
- Shut-off pressure 3.5 bar (50 psi).

Fitting: Connections for 13mm (1/2") id hose.

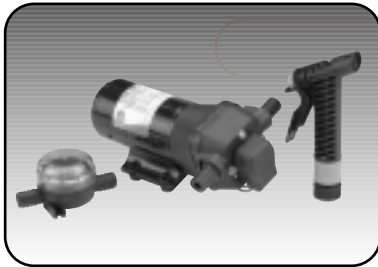
Size: 22cm long x 10.6cm wide x 10cm high (8.6" x 4.2" x 4.1").

Weight: 2.1kg (5.0lb).

31605-0392 Waterproof 12 Volt dc model, fuse 10 amp.

31605-0394 Waterproof 24 Volt dc model, fuse 7 amp.

For service and spare parts listing see page 160.



PAR-Max 4 Washdown

Heavy duty, high pressure deckwash pump.

- Powerful 16.3 lpm (3.6 gpm) flow rate.
- Very heavy duty motor for applications where continuous duty rating is required.
- Supplied complete with pumpguard and trigger nozzle.
- Snap-in ports.
- Self priming up to 3m (10 ft).
- High pressure jet blasts mud and silt from anchor chain and decks.
- Waterproof motor coating and sealed pressure switch allow mounting in exposed positions.

- Quiet diaphragm design allows dry running.
- Shut-off pressure 3.5 bar (50 psi).
- Thermal overload protection automatically stops the motor if it overheats due to overloading, with auto re-start feature.
- ISO 8846 MARINE (Ignition Protection).

Fitting: Connections for 19mm (3/4") id hose.

Size: 25cm long x 10.6cm wide x 10cm high (9.8" x 4.2" x 4.1").

Weight: 3.0kg (6.5lb).

31700-0392 12 Volt dc model, fuse 15 amp.

31700-0394 24 Volt dc model, fuse 7 amp.

For service and spare parts listing see page 160.



Wakeboard and Ski Boat Ballast Pump

Jabsco now offers a Wakeboard and Ski Boat Water Ballasting Pump. These pumps can deliver almost 40kgs (88 lbs) of water ballast per minute.

- Fills a typical 150 litre (33 gal) ballast tank in under 5 minutes.
- Reversible to both fill and empty ballast tanks.
- Self-priming and non air-locking.
- Exclusive (Patent pending) Run-dry Protection shuts off pump before impeller is damaged.
- ISO 8846 MARINE (Ignition Protection).

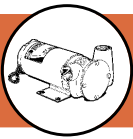
Fitting: Ports -13mm (1/2") NPT internal thread and 25mm (1") External Hose Barb.

Size: 181mm long x 121mm wide x 92mm high (7 1/8" x 4 3/4" x 3 5/8")

Weight: 2.7kg (6lb)

18220-0121 12 Volt Pump with Neoprene Impeller.

6303-0001 Replacement Neoprene Impeller.



PAR-Max 3 Shower Drain Pump

New generation, long life fully serviceable shower drain pump.

- 13.2 lpm (2.9 gpm) at 1m (3ft) head.
- Self priming up to 3m (10ft) allows mounting above wet bilges.
- Diaphragm design allows extended dry running.
- Continuous rated, heavy duty motor with waterproof coating for harsh bilge environments.
- Thermal overload protection automatically stops the motor if it overheats due to overloading, with auto re-start feature.

- ISO 8849 MARINE (Ignition Protection).
- ISO 8849 MARINE (Bilge Pump Standard).
- Complete with Pumpguard.
- Oil resistant elastimers.

Fitting: Connections for 19mm (3/4") id hose.

Size: 19.6cm long x 10.6cm wide x 10cm high (7.7" x 4.2" x 4.1").

Weight: 2.1kg (5.0lb).

31610-0092 12 Volt dc model, fuse 10 amp.

31610-0094 24 Volt dc model, fuse 7 amp.

18912-3050 Diaphragm kit.

For service and spare parts listing see page 160.



37202 Series 2 Shower Drain Pump

Updated version of the famous 37202 bilge, shower and sink drain pump, quiet running and corrosion resistant.

- 13 lpm (2.9 gpm) open flow output at 1m (3ft) head.
- Self-priming up to 2m (6ft) vertical lift allows mounting above wet bilges.
- Quiet running.
- Corrosion resistant materials throughout.
- Complete with Pumpguard.
- Diaphragm design allows extended dry running.

- ISO 8846 MARINE (Ignition Protection).
- ISO 8849 MARINE (Bilge Pump Standard).

Fitting: Connections for 19mm (3/4") id hose.

Size: 13cm wide x 15cm high x 19cm deep (5 1/4" x 5 3/4" x 7 1/2").

Weight: 2.5kg (5 1/2lb).

37202-2012 12 Volt dc model, fuse 10 amp.

37202-2024 24 Volt dc model, fuse 5 amp.

37182-0000 Service kit.

For service and spare parts listing see page 153.



Shower Sump System

Compact shower sump complete with built in strainer, float switch and pump.

- 44 lpm (11 gpm) at 1m (3ft) head.
- Recommended for discharge heads up to 2m (6ft).
- Three inlet ports for multiple shower installations.
- Clear screw down cover allows easy inspection.
- Internal check valve prevents backflow.
- Easy clean strainer.
- Motor rated for 1500 hours.
- Low amp draw conserves batteries.

- ISO 8846 MARINE (Ignition Protection).
- ISO 8849 MARINE (Bilge Pump Standard).

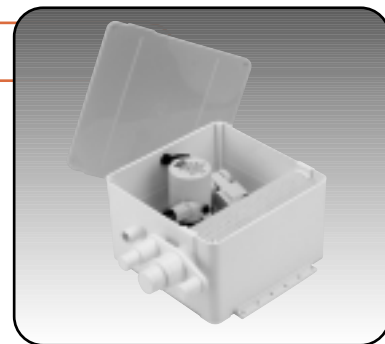
Fitting: Connections for 19mm (3/4"), 25mm (1"), 29mm (1 1/8") and 38mm (1 1/2") id inlet hoses and 19mm (3/4") discharge hose.

Size: 21cm wide x 28.5cm deep x 14cm high (8 1/4" x 11 3/4" x 5 1/2").

Weight: 1.2kg (2 1/2lb).

30296-2012 12 Volt dc model, fuse 5 amp.

30296-2024 24 Volt dc model, fuse 2.5 amp.



Water Puppy 2000 Shower Drain Pump

Good flow rate, continuously rated pump.

- 32 lpm (6.5 gpm) at 3m (10ft) total head.
- Self-priming up to 1.2m (4ft) allows mounting above wet bilges.
- Shower debris presents no problem to this bronze bodied, flexible impeller design.
- Simple design means fewer wearing parts - all user serviceable.
- ISO 8846 MARINE (Ignition Protection).
- ISO 8849 MARINE (Bilge Pump Standard).

Fitting: Connections for 1/2" male threaded fittings, and for 25mm (1") id hose.

Size: 19cm long x 12cm wide x 8cm high (7 1/2" x 4 3/4" x 3 1/8").

Weight: 3kg (6 1/2lb).

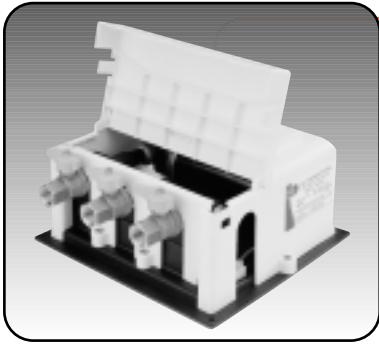
23680-3012 12 Volt dc model, fuse 15 amp.

23680-3024 24 Volt dc model, fuse 10 amp.

6303-0003 Replacement Nitrile Impeller.

For service and spare parts listing see page 152.





Oil Changer System

The Oil Change System consists of a robust self-priming flexible impeller pump mounted to an easy to install base and coupled to a five port manifold, factory fitted with three full flow ball valves. All are enclosed by a white plastic cover to dress-up the cleanest of engine rooms.

- The system includes a pump reversing switch to pump used oil out and new oil in
- The manifold (factory fitted with three valves) can be fitted with two more to accommodate up to five reservoirs
- The system cover includes a hinged valve cover to protect them from being accidentally opened

- The valve cover will not close after an oil change unless valves are securely closed
- ISO 8846 MARINE (Ignition Protected).

Size: 13cm high x 28cm wide x 28cm deep
(5¹/₄" x 10⁷/₈" x 11")
Ball Valves - 1/2" NPT

Weight: 4.1kg (9lb)

17820-0012 12 Volt dc, fuse 15 amp.
Oil Changer System

17820-0024 24 Volt dc, fuse 8 amp.
Oil Changer System

9200-0023 Replacement
Nitrile Impeller.

98024-0000 Additional 1/2" NPT Ball Valve.



Oil Change Pump

The Oil Change Pump is the same high quality pump used in the Jabsco multi-engine Oil Change System. The powerful pump can change oil in a typical V-8 engine in just minutes.

- Pump is reversible to both drain and refill engine oil
- Self-priming to 1m (3ft) of lift
- Includes 3/8" NPT full flow ball valve
- Reversing switch guard to avoid accidental activation

- ISO 8846 MARINE (Ignition Protected).

Fitting: Connections for 3/8" NPT male threaded fitting.

Size: 20cm long x 10cm wide x 11cm high
(7⁷/₈" x 3³/₄" x 4¹/₁₆"

Weight: 4.1kg (9lb).

17830-0012 12 Volt dc, fuse 15 amp.
Oil Change Pump

17830-0024 24 Volt dc, fuse 8 amp.
Oil Change Pump

9200-0023 Replacement
Nitrile Impeller.



Porta-Quick™

The Porta-Quick™ Portable Oil Changer makes quick, clean and easy oil changes on-board any boat, because it uses the vessel's own power supply to operate the powerful oil reservoir mounted flexible impeller pump.

- 13 litres (14 Quart) container easily handles two engines.
- Sturdy bronze pump head.
- High-temperature resistant Teflon™ dip-stick probe.
- Non-collapsible thick wall suction hose.
- Garden hose thread adaptor included, for dip-sticks with GHT male threaded ends.
- Fixed bail prevents pail wobble and spillage.

- Pail, lid and pump assembly fully assembled.

- ISO 8846 MARINE (Ignition Protected).

Size: 35cm high x 34cm diameter
15⁵/₈" x 13¹/₂"

Hose - 13mm (1/2") id x
120cm (48") long
Probe - 6.5mm (1/4") od x
100cm (40") long

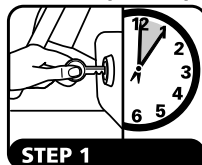
Weight: 4.1kg (9lb)

17800-2090 12 Volt dc, fuse 15 amp.
Oil Changer

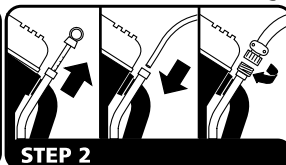
17800-2091 24 Volt dc, fuse 8 amp.
Oil Changer

9200-0023 Replacement
Nitrile Impeller.

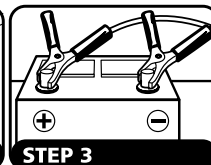
Four simple steps for fast, clean oil changes



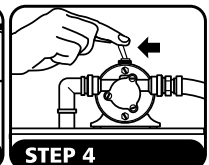
STEP 1
Start engine and run for 5 minutes to heat the oil



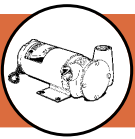
STEP 2
Remove the dipstick and insert the probe tube or attach the garden hose adaptor



STEP 3
Attach the power cord clips to the engine's battery.
Orange = Positive
Black = Negative



STEP 4
Flip the pump/motor switch to drain the crankcase



Handy Boy Utility Pump

Versatile polished brass multi-purpose hand pump.

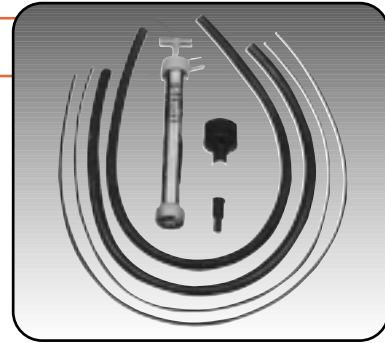
- Drain, fill or top up engine and gearbox oil.
- Overcomes problem of hard to reach drain plugs and filler caps.
- Oil and corrosion resistant brass neoprene construction with up to 7 lpm (1 1/2 gpm) output.
- 1001 other uses on any boat.

Fitting: Connection for 13mm (1/2") id hose.
Foot adaptor for 13mm (1/2") id hose.
2 off 13mm (1/2") id hoses, 1 x 6.5mm (3/16") probe, 1 x 6mm (1/4") probe.

Size: 31cm long x 3cm diameter (12" x 1 1/4").

Weight: 0.9kg (2lb).

33799-0000 Handy Boy.



Little Pal Utility Pump

Compact polished brass multi-purpose hand pump.

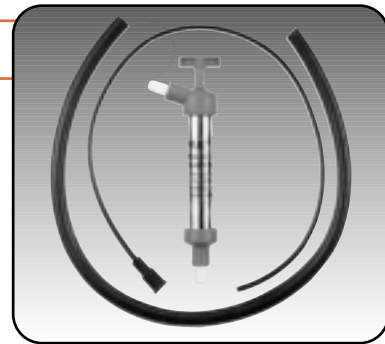
- Ideal for small engine and gearbox oil drain.
- Simply pump old oil out with dipstick probe.
- Oil and corrosion resistant brass and neoprene construction with up to 5 lpm (1 gpm) output.
- Small enough to fit any tool box.

Fitting: Connection for 13mm (1/2") id hose. 1 x 6mm (1/4") probe.

Size: 26cm long x 3cm diameter (10 1/4" x 1 1/4").

Weight: 0.5kg (1lb).

34060-0010 Little Pal.



Engine Oil Drain Pump

Polished brass hand pump connects directly to engine oil dipstick tube on many popular marine engines such as OMC and Mercruiser.

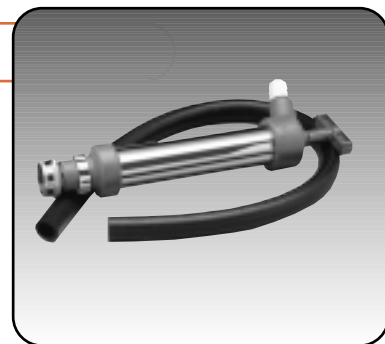
- Screws onto threaded male 3/4" garden hose (GHT) fitting on top of dipstick tube.
- Gives simple 'one-hand' pumping.
- Complete with 60cm (2ft) of 13mm (1/2") id drain hose.

Fitting: Connection for 3/4" GHT male thread.

Size: 26cm long x 33mm diameter (10 1/4" x 1 1/4").

Weight: 0.5kg (1lb)

34060-0130 Engine Oil Drain Pump.



Permanent Oil Drain Hose Kit

The Jabsco Oil Drain Hose includes a drain plug fitting, oil drain hose assembly, hose hanger and a cap. This provides an easy method of connecting to several pump types for neat and easy oil removal.

- Reinforced flexible oil rated drain hose
- 1/2" - 20 threaded oil drain fitting with two hose connection points to assure hose is oriented in desired direction
- Hose hanger secures hose end above oil
- Threaded cap seals hose end

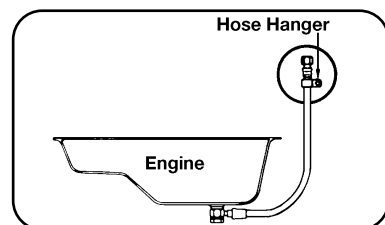
Size: Hose - 10mm id x 1.2m long (3/8" x 48")
Drain fitting - 1/2" - 20 thread

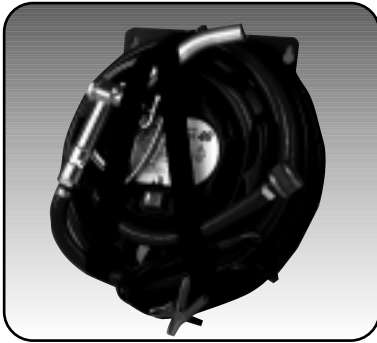
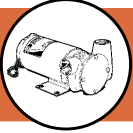
Weight: .5kg (1lb)

18080-0000 Hose & Drain Fitting

Carton: 12 Kits

Not recommended for automobiles with drainplugs exposed to potential road hazard damage.





Fuelmaster 40

All inclusive diesel pumping system, ideal for dockside and boatyard refuelling.

- 35 lpm (9 gpm) at 2m (6.5ft) head.
- 6m (20ft) maximum total head.
- Self priming up to 2.5m (8ft) vertical lift.
- -20°C (-4°F) to +40°C (104°F) operating temperature range.
- 35 minutes at 2 metres (6.5ft) at 20°C (68°F).
- Rugged aluminium head.
- Trigger nozzle, hose, strainer and mountable carry case included as standard.
- Accessories available.

- ISO 8846 MARINE (Ignition Protection).

Size: 43cm high x 17cm deep x 43cm wide (17" x 6 1/2" x 17").

Weight: 5.5kg (12.1lb).

50140-0000 12 Volt dc model, fuse 20 amp.

50140-0100 24 Volt dc model, fuse 10 amp.

SK414-0000 Service kit, By pass kit

SK413-0000 Service kit, Pump kit

For service and spare parts listing see page 152.



Sliding Vane VR100

Heavy duty, continuously rated, diesel pump.

- 105 lpm (28 gpm) at 3m (10ft) total head.
- Self priming up to 5m (16ft) vertical lift.
- Optional fitted switch, fuse and ports.
- -30°C (22°F) to +40°C (104°F) operating temperature range.
- IP55 and thermal protected motor.
- ISO 8846 MARINE (Ignition Protection).

Fitting: Connections for 32mm (1 1/4") id hose, or 1" BSP.

Size: 27cm long x 14.5cm wide x 18cm high (10 1/2" x 5 3/4" x 7 1/4").

Weight: 9kg (19.8lb).

VR100-1122 32mm (1 1/4") id hose, 24 Volt dc, fitted with 20 amp switch and circuit breaker.

For service and spare parts listing see page 152.



Sliding Vane VR050

Continuously rated, diesel pump.

- 50 lpm (13.7 gpm) at 3m (10ft) total head.
- Self-priming up to 3m (9.6ft) vertical lift.
- Optional fitted switch, fuse and ports.
- -30°C (22°F) to +40°C (104°F) operating temperature range.
- IP55 motor.
- ISO 8846 MARINE (Ignition Protection).

Fitting: Connections for 25mm (1") id hose, or 3/4" BSP.

Size: 23cm long x 13cm wide x 15cm high (8 1/2" x 5" x 5 1/4").

Weight: 5kg (11lb).

VR050-1012 25mm (1") id hose, 12 Volt dc, fuse 20 amp, fitted switch.

VR050-1112 25mm (1") id hose, 24 Volt dc, fuse 10 amp, fitted switch.

For service and spare parts listing see page 152.



Sliding Vane 23870

Light duty, 45 minute rated diesel pump.

- 35 lpm (9 gpm) at 3m (10ft) head.
- 6m (20ft) maximum total head.
- Self-priming up to 2.8m (9ft) vertical lift.
- -30°C (22°F) to +40°C (104°F) operating temperature range.
- 35 minutes at 3 metres (10ft) at 30°C (86°F).
- Rugged aluminium pump head.
- Integral switch and fuse fitted as standard.
- Accessories available.

- ISO 8846 MARINE (Ignition Protection).

Fitting: Connections for 19mm (3/4") id hose.

Size: 19cm long x 11cm wide x 14cm high (7" x 5 1/2" x 4 1/2").

Weight: 2kg (4.4lb).

23870-1200 12 Volt dc model, fitted switch, fuse 20 amp.

23870-1300 24 Volt dc model, fitted switch, fuse 10 amp.

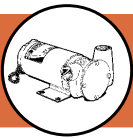
SK399-0101 Service kit

For service and spare parts listing see page 152.

WARNING



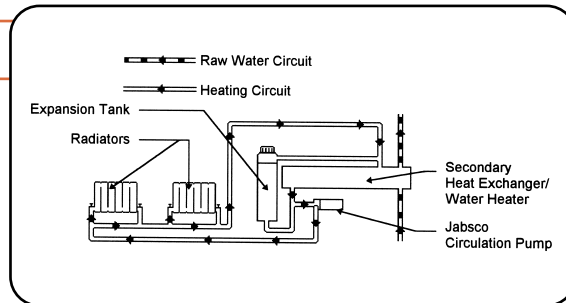
Sliding Vane Pumps must not be used for petrol, petroleum products or any fluid with a flash point below 37°C (98°F).



Jabsco has a range of circulation pumps for use in low head circulation duties. From engine cooling, to marine central heating systems, Jabsco circulation pumps are designed for reliability, ease of use, and are capable of withstanding high system pressures.

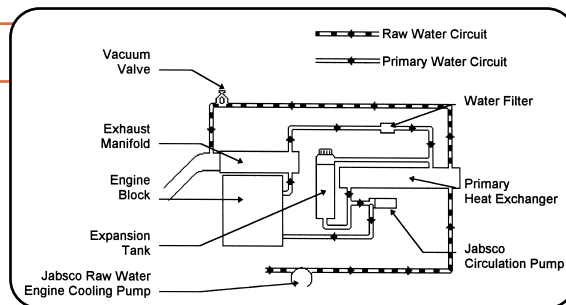
Marine Central Heating System

This system provides central heating which works just like the heating system in the home. Jabsco circulation pumps can be used to circulate water heated by either a heat exchanger or diesel fired water heater through radiators situated in the accommodation. These radiators can be individually adjusted to provide the best and most comfortable conditions.



Off Engine Cooling System

Fresh water cooling/intercooling is the type of engine cooling system which incorporates a heat exchanger. Such a system has two water circuits: the primary water circuit which uses Jabsco circulation pumps to circulate a water-antifreeze mixture through the engine block, and the raw water circuit which uses Jabsco flexible impeller pump to pass raw water through the heat exchanger and then into the exhaust system.



Magnetic Drive Centrifugal Pump

Compact, robust, high flow, long life circulation pump for use with hot water systems, heating systems, windscreen washing and all other applications where circulation is required.

- 15 lpm (3.5 gpm) at 1.2m (4ft) head.
- Stall pressure 0.21 bar (2m head).
- Magnetic drive means no seal to wear.
- Continuously rated 2500 hour motor.

- IP53 enclosure rating.
- ISO 8846 MARINE (Ignition Protection).
- Fitting:** Connections for 19mm (3/4") hose
- Size:** 14.5cm long x 8.5cm wide x 6.4cm high (5 3/4" x 3 3/8" x 2 1/2").
- Weight:** 0.36kg (0.8lb).
- 59500-0012** 12 Volt dc model, fuse 3 amp.
- 59500-0024** 24 Volt dc model, fuse 1.5 amp.



Centri-Puppy Circulation Pump

Robust, high flow, long life circulation pumps for use with hot water systems, heating systems, windscreen washing and all other applications where circulation is required.

- 74 lpm (16 gpm) at 1m (3ft) head.
- Stall pressure 0.35 bar (3.5m head).
- Robust bronze body and impeller easily handles small debris.
- Centrifugal design moves liquid fast and economically in low head installations.
- Commercial duty version with mechanical seal and heavy duty motor available.
- Either lip seal or mechanical seal versions available.
- ISO 8846 MARINE (Ignition Protection).

Fitting: Connections for 3/4" BSP or 3/4" NPT.

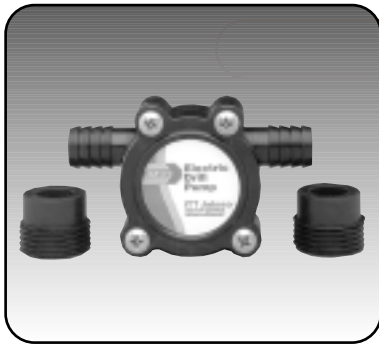
Size: 17cm long x 10cm wide x 9cm high (6 1/2" x 4" x 3 1/2").

Weight: 2.3kg (5lb).

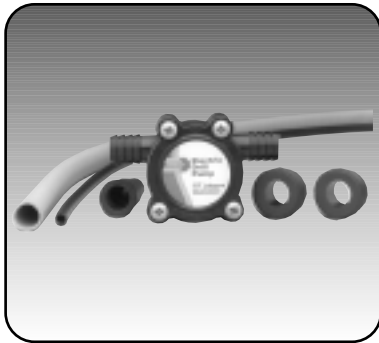
- 18510-0000** 12 Volt dc, lip seal, NPT ports, fuse size 10 amp.
- 18510-0001** 24 Volt dc, lip seal, NPT ports, fuse size 5 amp.
- 18510-2000** 12 Volt dc, lip seal, BSP ports, fuse size 10 amp.
- 18510-2001** 24 Volt dc, lip seal, BSP ports, fuse size 5 amp.
- 18510-0020** 12 Volt dc, mechanical seal, NPT ports, fuse size 10 amp.
- 18510-0021** 24 Volt dc, mechanical seal, NPT ports, fuse size 5 amp.
- 18510-9200** 12 Volt dc heavy duty, mechanical seal, NPT ports, fuse size 10 amp.
- 18510-9300** 24 Volt dc heavy duty, mechanical seal, NPT ports, fuse size 5 amp.

For service and spare parts listing see page 152.





17250-0003



17215-0000

Drill Pumps

Jabco Drill Pumps provide a very versatile means of transferring fluid almost anywhere an electric drill with 1/4" to 3/8" chuck can be operated. They provide easy powered pumping almost anywhere a hand utility pump might be used.

- Pumps up to 13 lpm (2.9 gpm).
- Self-priming to 1m (3ft).
- 6.5mm (1/4") diameter shaft.
- Supplied with 3/4" Garden hose thread port adapters.
- Model 17215-0000 includes accessories for Oil Changing.

Fitting: Connections for 13mm (1/2") id hose and 3/4" GHT female threaded fittings.

Size: 48mm long x 72mm wide x 48mm high (2" x 3" x 2")

Weight: 0.2kg (1/2lb)

17250-0003 Pump (boxed) with two Garden Hose Thread Port Adapters

17215-0000 Pump (Poly bagged with header card) with Garden Hose Port Adapters and 1/4" x 40" Probe plus 3 feet of 1/2" Hose for changing oil through a dipstick tube

Carton: 12 bagged units.

17255-0003 Replacement Nitrile Impeller and Shaft.

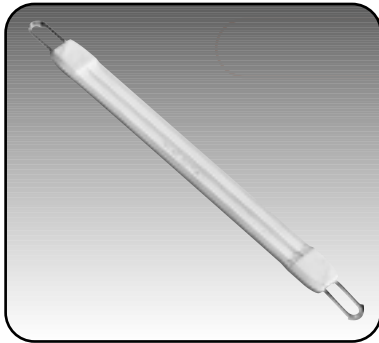
WARNING



Do not operate electric drills in areas where flammable vapours may be present.

Always use a RCD circuit breaker when using electrical equipment near water.

Always ensure that equipment is properly earthed.



Handee Hitch

Jabco utility Handee Hitches are designed to simplify the task of stowing accessories. The soft gray rubber is extremely elastic and will conform to fit and grip objects without abrasion.

- 25cm (10") long - stretches to 45cm (18").
- Stainless Steel spring clip at each end.
- Double them for added strength.
- Hook together for added length.

35611-0010 Four Handee Hitches per Header Carded Poly Bag.

Carton: 12 bags.



Skipper Clips

Skipper Clips provide easy attachment of flags, boat canopies, covers and curtains. The extra long reach of the hook will accept grommets inset as much as 19mm (3/4") from the fabric edge.

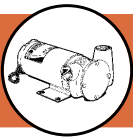
- Stainless Steel Clip and Screw Eye.
- Self-tapping screw attaches to wood, fiberglass and metal.

34560-0000 Clip with Screw Eye - 4 per display card.

Carton: 12 cards.

34561-0000 Screw Eye only - 12 per bag.

Carton: 72 bags.



53080 Dockside Utility Pump

Heavy duty 220 Volt AC general utility for dockside pump-out duties.

- 4000 lph (1056 gph) output at 3m (10ft) total head.
- Built in dry running protection for 30 minutes after initial prime.
- Primes from dry.
- Simple design means fewer wearing parts - all user serviceable without disassembling pump.
- Handles hard and soft solids without clogging.
- Choice of nitrile impeller for oil based products or neoprene for water based products.

Fitting: Connections for 1½" BSP.

Size: 33cm long x 24cm wide x 24cm high (13" x 9½" x 9½").

Weight: 15 kg (33 lb).

- 53080-2003** 220 Volt AC nitrile impeller.
- 53080-2001** 220 Volt AC neoprene impeller.
- SK411-0003** Service kit, Nitrile.
- SK411-0001** Service kit, Neoprene.



53040 Dockside Utility Pump

Heavy duty 220 or 110 Volt AC general utility for dockside pump-out duties.

- 2000lph (528gph) output at 3m (10ft) total head.
- Built in dry running protection for 30 minutes after initial prime.
- Primes from dry.
- Simple design means few wearing parts - all user serviceable without dismounting pump.
- Handles hard and soft solids without clogging.
- Choice of nitrile impeller for oil based products or neoprene for water based products.

Fitting: Connections for 1" BSP.

Size: 29cm long x 21cm wide x 23cm high (11½" x 8¼" x 8¾").

Weight: 9.5kg (21lb)

- 53040-2003** 220 Volt AC model nitrile impeller.
- 53040-2021** 220 Volt AC model neoprene impeller.
- 53040-2103** 110 Volt AC model nitrile impeller.
- SK409-0003** Service kit, Nitrile.
- SK409-2021** Service kit, Neoprene.



53020 Utility Pump

Medium duty 220 Volt AC general utility pump for transfer and dockside pump out.

- 1000 lph (264 gph) output at 3m (10ft) head.
- Built in dry running protection for 30 minutes after initial prime.
- Primes from dry.
- Simple design means fewer wearing parts - all user serviceable without dismantling pump.

- Choice of nitrile impeller for oil based products or neoprene for water.

Fitting: Connections for ¾" BSP internal thread

Size: 26cm long x 16cm wide x 16cm high (10¼" x 6¼" x 6¼")

Weight: 7.1 kg (16lb)

- 53020-2011** 220 Volt AC neoprene impeller
- 53020-2013** 220 Volt AC nitrile impeller
- SK416-001** Service kit neoprene
- SK416-003** Service kit nitrile



50045 Centrifugal AC Motor Pump Unit

Medium duty 220 Volt AC general purpose pump for circulation and dockside transfer.

- 3000 lph (790 gph) output at 1m (3ft) total head.
- Can be dry run for prolonged periods.
- Will handle solids 7mm in diameter.
- Simple design means fewer wearing parts.

- Non-pulsating flow.

- Can handle diesel fuel, light oils and water.

Fitting: Connections for ¾" BSP

Size: 28cm long x 16cm wide x 16cm high (11" x 6¼" x 6¼")

Weight: 6.4kg (14.1lb)

- 50045-2100** 220 Volt AC motor pump unit

